





+ 2

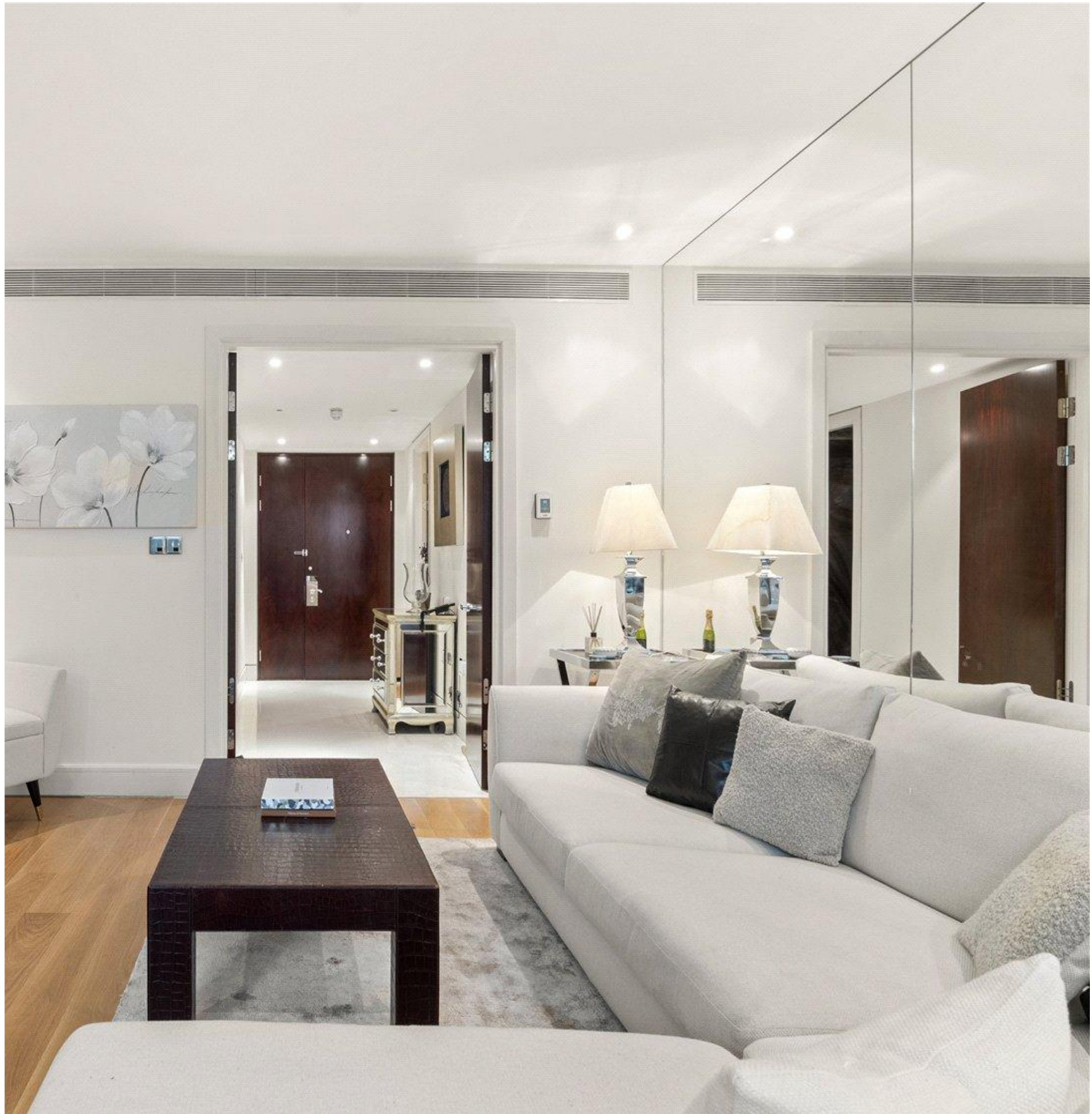
+ 2

+ 1

Tenure: Long Term

Council Tax - H

This exceptional two-bedroom apartment is set within the prestigious Knightsbridge Apartments at 199 Knightsbridge, one of SW1's most sought after residential addresses.



G.10 The Knightsbridge Apartments, Knightsbridge, London, £3,000 per week



A beautifully presented two-bedroom apartment in a prestigious Knightsbridge development featuring 24-hour concierge, residents' gym, spa, and swimming pool. The spacious accommodation extends to approximately 1,050 sq ft (97.5 sq m) and comprises a generous reception/dining room, fully fitted kitchen, master bedroom with en-suite bathroom, second double bedroom, and a separate bathroom. Comfort is enhanced by an integrated air-cooling system throughout.

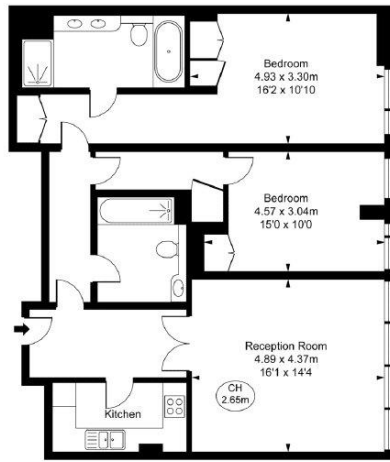
The apartment also includes secure underground allocated parking. Residents enjoy access to a recently refurbished leisure complex, which includes a swimming pool, spa, gym, and dedicated exercise rooms. The building also offers 24-hour concierge services and comprehensive security. Ideally located opposite Hyde Park and within walking distance of Harrods and the world-class boutiques, restaurants, and cafés of Knightsbridge, the property combines luxury living with unparalleled convenience.



-
- 24hr Concierge
 - Swimming Pool
 - Gym
 - 2 Double Bedrooms
 - Prime Knightsbridge Location
 - Council Tax Band: H

The Knightsbridge Apartments,
Knightsbridge, SW7
Approximate Gross Internal Area
97.33 sq m / 1,048 sq ft

(CH = Ceiling Heights)



Ground Floor



The plan is to scale. It is for guidance only and is not a contract. All measurements and areas are approximate and will be taken at the discretion of the Certified Property Measurer. © Knightbridge International Real Estate



Knightsbridge International Real Estate

5 Harwood Road
London, SW6 4QP

T: 020 8058 0052
E: info@kbire.co.uk

<https://kbire.co.uk/>

Score	Energy rating	Current	Potential
92+	A		
81-91	B		
69-80	C	78 C	79 C
55-68	D		
39-54	E		
21-38	F		
1-20	G		