



## Craig Mar, Hebden, Skipton, North Yorkshire, BD23 5EB

Craigmar was conceived and built in 1928 by a prominent local family involved in many of the village's 20th-century developments. The house was inspired by a villa on Lake Geneva, featuring a unique Mediterranean aesthetic with a distinctive roofline designed to take advantage of the dramatic scenery.

32 Sheep Street, Skipton, BD23 1HX

Tel: 01756 701010

Email: [skipton@dacres.co.uk](mailto:skipton@dacres.co.uk)



## Craig Mar, Hebden, Skipton, North Yorkshire, BD23 5EB

Harrogate 22 miles, Skipton 15 miles, Leeds 32 miles (all distances approximate)

**Guide Price: £1,400,000**

### General Remarks

Creating this brave modern house in its Yorkshire Dales setting allowed the garden layout to be engineered to master the sloping site, creating a tiered effect reminiscent of Swiss or Italian lakeside villas. The grounds—designed by the famous Backhouse of York—with their signature terraced rock gardens and trees, have matured to create a year-round display and wildlife habitat.

Feature wood panel doors lead into the hallway which sits to rear of the property with similar 1920's period internal doors through-out. The hallway with a pattern wood block floor, cornicing, understairs cupboard, four feature radiators, also provides access to the first floor via an imposing sweeping staircase.

From the hall you enter a formal living room with a fabulous wood burning stove set in a Marble fireplace with tiled hearth, Bamboo flooring, two feature radiators, concertina doors with a pair of windows to the side lead out to the front patio area. Double doors lead through into the dining room which has a wooden floor, two feature radiators and double glazed windows to two sides. Onto an office with a window to the front, two feature radiators, bamboo flooring and a fireplace. There are two bedrooms to the ground floor, both with feature radiators and windows, one overlooking the rear garden and the other looking out to the side of the property. A shower room offers a feature tiled floor, a Laufen pedestal wash hand basin and close coupled w.c., a shower cubicle with sliding doors having a rain hood and two shower attachments, part tiled walls, feature towel rail and window to the side.

The kitchen diner offers a selection of drawer and base units with full sized bespoke larder units, Silestone worktops, an integrated Neff dishwasher, combination oven, an oven, warming drawer, a Neff four ring Induction hob, a Franke extraction fan, a John Lewis wine cooler, feature radiator and tiled limestone flooring. A bow window is above the pair of sunken sinks providing the most amazing views of the formal garden and of Hebden. Four four atrium style skylight windows provide an abundance of light and a Rofer and Rodi Stove is inset into the chimney breast. The dining area has windows to two sides, the staircase leading to the cellar and a door to the rear entrance. The cellar comprises of, a boiler room, multiple storage rooms, an external door to the side of the property and windows letting light in from the driveway above..

To the first floor landing with a feature radiator, glass atrium ceiling and a feature length window overlooking the village of Hebden and stunning views into the distance. The master bedroom has a double glazed window to the front with views towards Burnsall Fell, a feature radiator, an en-suite fitted with a pedestal wash hand basin, close coupled w.c., Laufen bath and Matki oversized shower cubicle with rain hood and shower attachment, feature tiled floor and open views over the Fells. Bedroom two and three are to the rear with a feature radiator and double glazed windows and countryside views. The house bathroom with bath with glass screen and shower over, pedestal wash hand basin and close coupled w.c., feature chrome heated towel rail, storage cupboard and rubber flooring.



Externally, the private tarmac, tree lined driveway sweeps from the roadside towards the property. To the right are formal well stocked gardens with stunning views of the Village. A pond with a central Island and bridge over is a delightful feature and an archway leads to the lower part of the garden which has sections of lawned areas along with well stocked borders, seating areas and a Holly hedge boundary to one side. A gravel pathway leads to a Cavern area and the path also leads to the front of the property. A covered veranda area provides further seating and a higher patio area is used for storage. The gravel stretches across to the opposite side and meets the tarmac driveway providing ample parking and a double garage with an up and over door to the front along with power and light.

The property is located within the heart of this picturesque and unspoilt village, particularly popular with those who enjoy walks through the surrounding scenic countryside of the Yorkshire Dales National Park and for the award winning local pub and a popular tea room. The historic market town of Grassington which plays a central role in the TV drama All Creatures Great and Small is just a couple of miles down the road with an extensive range of shops and other amenities catering for most everyday needs. The market town of Skipton is within some twelve miles.







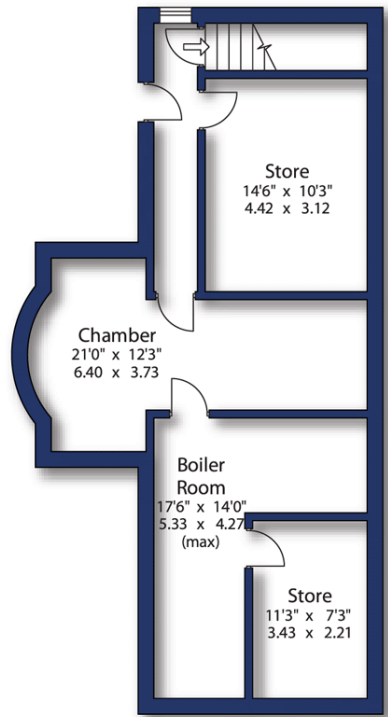




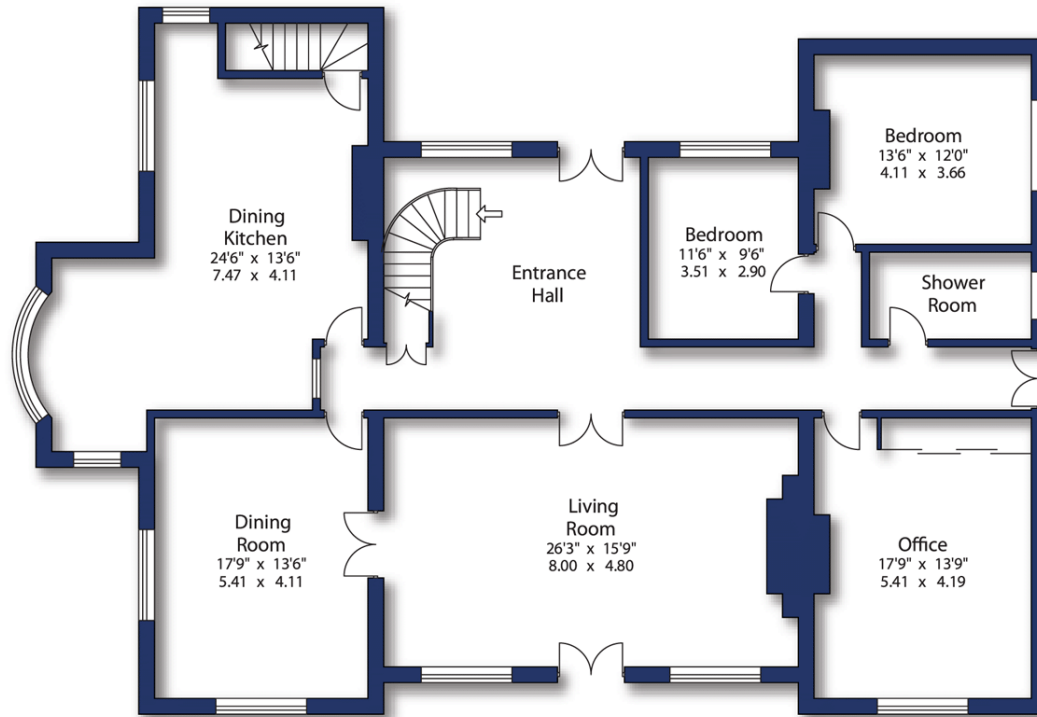




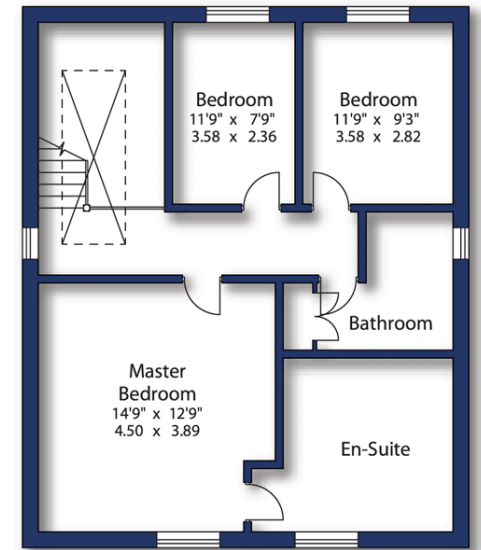
# Floorplans



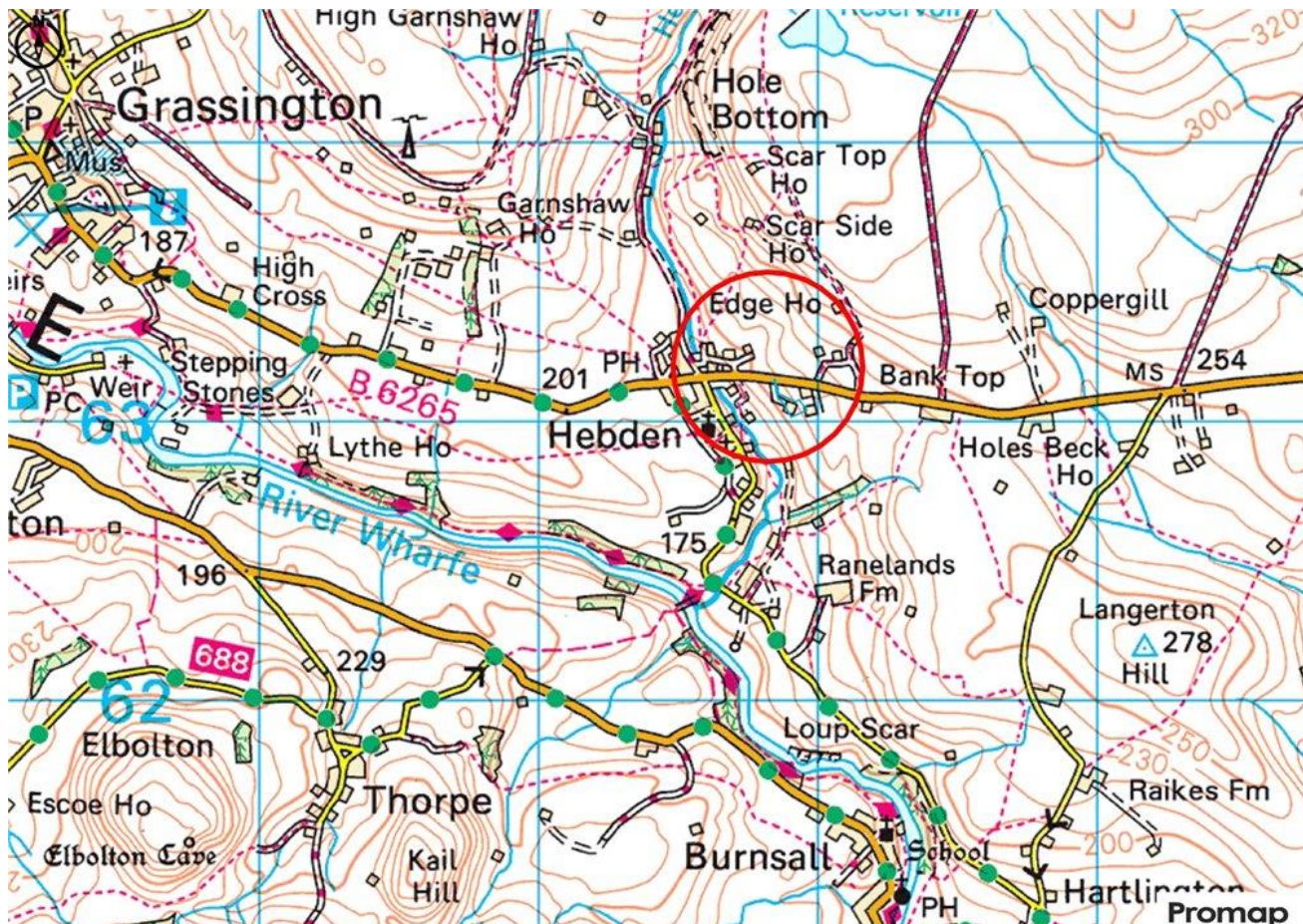
Lower Ground Floor



Ground Floor



First Floor



## Directions

On entering the village of Grassington follow Hebden Road round passing the junior school and the Yorkshire Dales National Parks car park on the right following the signs for Hebden. On entering Hebden drive past the Clarendon Hotel, proceed up the hill turning to the right immediately after leaving the 40mph zone. Down the private laurel-lined drive you will find the property.

What3Words pursuit.node.acre

## Local Authority & Council Tax Band

- North Yorkshire Council,
- Council Tax Band G

## Tenure, Services & Parking

- Freehold
- Mains electricity and water. Drainage is to a septic tank(new in October 2025). Domestic heating is from a Biomass boiler.
- There is a double garage and parking on site
- The property is located in the Yorkshire Dales National Park

## Internet & Mobile Coverage

For information on Internet and Mobile coverage access the Ofcom website from this link <https://checker.ofcom.org.uk/>

## Flooding

For information on flood risks please use this link [Check for flooding in England - GOV.UK](https://www.gov.uk/check-for-flooding)

## Agent's Notes

If any issue such as location, communications or condition of the property are of material importance to your decision to view then please discuss these priorities with us before making arrangements to view.

## Buyer Anti Money Laundering Checks

We are required by HMRC to undertake Anti Money Laundering checks for all buyers to the contract. These checks are carried out through iamproperty who will make a charge of £34.20 inclusive of VAT per buyer. We will also need to see proof of funding. We cannot mark a property Sold Subject to Contract until the checks have been satisfactorily completed.


## Referral Fees

Where we refer a seller/s or a purchaser/s to any of the following providers (and you are welcome to use an alternative), we reserve the right to claim a reasonable commission in respect of such services which will be charged to the third party provider: - Conveyancing Provider to deal with the transfer of title and Surveyor Services. In either instance the fee/commission will not exceed £450 per case. In respect of referrals to Mortgage Advice Bureau the average fee will be approximately £450 but may vary and is case specific. Any such commission does not affect our prices to you but may result in the third party provider's prices being higher than it may otherwise be.

Dacres Ref: SKI260127MIK/12.05.26/1

**Disclaimer** 1. Our description of any appliances and services (including central heating systems) should not be taken as any guarantee that these are in working order. They have not been, nor will they be tested. An Energy Performance Certificate is available on request. 2. These particulars do not constitute an offer or contract of sale, and any prospective purchaser should satisfy themselves by inspection of the property. 3. You should not rely on anything stated verbally by any member of Dacres, Son & Hartley's staff unless we confirm the matter in writing. 4. All illustrations are for identification purposes only and are not to scale. 5. Measurements are taken in imperial to the nearest three inches. 6. There is no implication that an item is included within the sale by virtue of its inclusion within any photograph. 7. Buyers should consider an independent check of all aspects of the property. 8. The sale is subject to all rights of support, public and private rights of way, water, light, drainage and other easements, quasi easements and wayleaves, and all or any other rights whether mentioned in these particulars or not. Dacres, Son & Hartley is a registered trademark of Dacres, Son & Hartley Limited.

 Mortgage Advice Bureau  
01274 515 763

 Dacres Surveys  
Call for a quote  
01943 885 400

Contact us  
01756 701010  
  skipton@dacres.co.uk

