





+ 3

+ 3

+ 1

Tenure: To be advised

EPC: D (61)

Council Tax - H

A stunning three-bedroom apartment spanning approximately 3,160 sq ft, situated in the prestigious Imperial House, W8. This exceptional residence boasts generous living space, elegant interiors, and a beautiful private outdoor area, offering a rare combination of luxury and tranquillity. Ideally located moments from Hyde Park and the amenities of Kensington High Street, this is prime central London living at its finest.



Flat 11, Imperial House, Kensington, W8 5EH

£6,250 per week



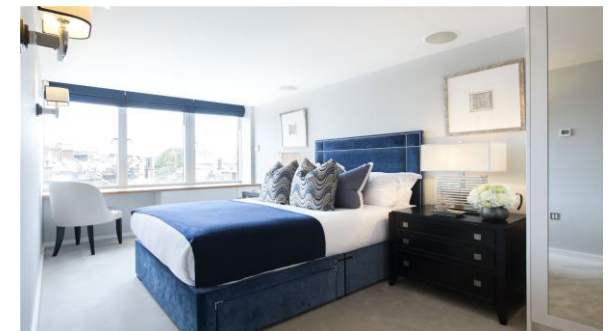
This impressive three-bedroom apartment, extending to approximately 3,160 sq ft, is located within the highly sought-after Imperial House in the heart of Kensington, W8. Offering an abundance of natural light and expansive proportions throughout, the property provides both comfort and sophistication on a grand scale.

The apartment features a vast reception and entertaining space, ideal for both formal living and relaxed everyday use, alongside a well-appointed kitchen finished to a high standard. The three generous bedrooms are complemented by luxurious bathrooms and excellent storage, creating a well-balanced and practical layout.

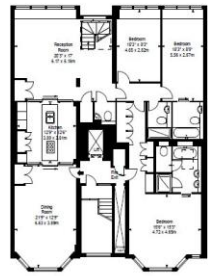
A standout feature of the property is its beautiful outdoor space, providing a private oasis perfect for entertaining, dining, or simply unwinding, which is a rare find in this prime central London location.

Imperial House is perfectly positioned in one of London's most desirable neighbourhoods. Residents benefit from close proximity to the boutiques, restaurants, and cafés of Kensington High Street, as well as excellent transport links. Hyde Park is just moments away, offering vast open green spaces, walking and cycling routes, and some of the capital's most iconic scenery.

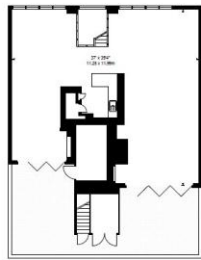
This is a rare opportunity to acquire a substantial and elegant apartment in a prime Kensington location, combining space, style, and exceptional access to both nature and city living.



-
- Council Tax Band: H
 - Located in the heart of Kensington (W8)
 - Moments from Hyde Park
 - Close to Kensington High Street, offering boutique shopping, cafés, and restaurants
 - Three generously sized bedrooms
 - Spacious reception and entertaining areas
 - High-specification kitchen and bathrooms
 - Beautiful private outdoor space, ideal for entertaining
 - Abundance of natural light throughout



FIFTH FLOOR



SIXTH FLOOR

Project Details
FLAT 11
IMPERIAL HOUSE
11-13 YOUNG STREET
LONDON
W8 5EH

SCALE: 1:200 @ A4
 REFERENCE NUMBER: 102937
 Plans Drawn: 13.01.2022

Surveyed and Drawn By:
BKR
 Holmway Work Space
 1 Empire Works
 London
 SW15 3SF
 Tel: 0144 297 2023
 info@bkrconsultants.co.uk
 www.bkrconsultants.co.uk
 © BKR 2022

APPROX. GROSS INTERNAL AREA *
 3059 P1 - 284.19 M²

APPROX. OUTSIDE SPACE AREA *
 605 P1 - 55.20 M²



Knightsbridge International Real Estate

5 Harwood Road
 London, SW6 4QP
 T: 020 8058 0052
 E: info@kbire.co.uk
<https://kbire.co.uk/>

Score	Energy rating	Current	Potential
92+	A		
81-91	B		
69-80	C		74 C
55-68	D	61 D	
39-54	E		
21-38	F		
1-20	G		