

Rodney Gardens

Pinner • Middlesex • HA5 2RP

Asking Price: £1,150,000



coopers
est 1986

Rodney Gardens

Pinner • Middlesex • HA5 2RP

A unique and versatile detached home offering an impressive blend of character, flexible living space, and substantial outbuildings, all set within a generous garden plot in the heart of Pinner. The ground floor features a welcoming reception room to the front, alongside a spacious open-plan kitchen/reception area creating an ideal hub for everyday living and entertaining. An additional office provides an excellent work-from-home space, while two well-proportioned bedrooms and family bathroom facilities complete the accommodation on this level. The first floor is dedicated to a further bedroom suite, offering privacy and separation from the main living areas, together with additional eaves access for storage.

Externally, the property truly stands out with a large rear garden leading to a range of useful outbuildings, including a substantial studio, separate shed, additional store and a greenhouse. These spaces offer fantastic potential for a home office, gym, creative studio, workshop, or further ancillary accommodation, subject to any necessary consents. This distinctive home combines adaptable interiors with exceptional outdoor space, making it ideally suited to families, professionals working from home, or buyers seeking flexible accommodation in a sought-after residential location.

FOUR BEDROOM

DETACHED BUNGALOW

CORNER PLOT

BEAUTIFUL LANDSCAPED GARDEN

GARAGE/STORE ROOMS/GREENHOUSE

MULTIPLE RECEPTION ROOMS

EXTENDED KITCHEN AND DINER

SOUGHT AFTER LOCATION

POTENTIAL TO FURTHER EXTEND STPP

1989 SQ.FT

These particulars are intended as a guide and must not be relied upon as statements of fact. Your attention is drawn to the Important Notice on the last page.





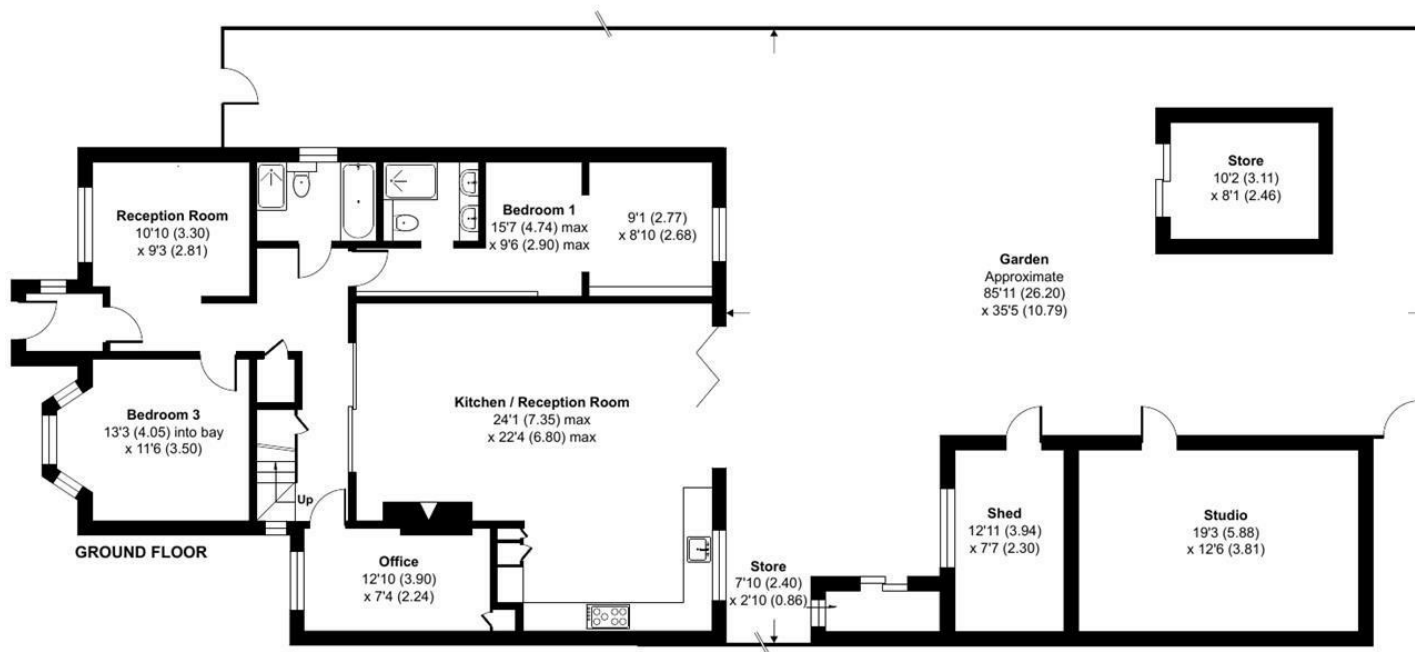
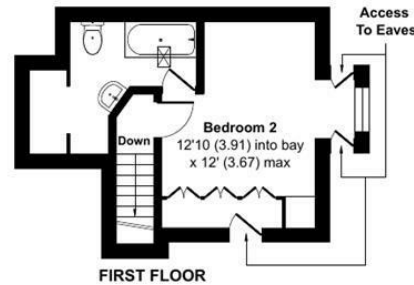
Rodney Gardens, Pinner, HA5

Approximate Area = 1550 sq ft / 143.9 sq m

Outbuildings = 439 sq ft / 40.7 sq m

Total = 1989 sq ft / 184.6 sq m

For identification only - Not to scale



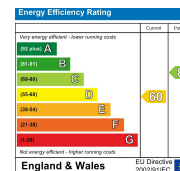
Floor plan produced in accordance with RICS Property Measurement 2nd Edition, Incorporating International Property Measurement Standards (IPMS2 Residential). © nchecom 2026. Produced for Coopers. REF: 1459169

coopers
est 1986



**18 Bridge Street, Pinner,
Middlesex, HA5 3JF**
pinner@coopersresidential.co.uk

CoopersResidential.co.uk



Important Notice: These particulars, whilst believed to be accurate are set out as a general outline only for guidance and do not constitute any part of an offer or contract. Intending purchasers should not rely on them as statements or representation of fact, but must satisfy themselves by inspection or otherwise has the authority to make or give any representation or warranty in respect of the property.